



## NOTICE TO MARINERS

### No. 2 of 2025-Permanent Wash Restriction Areas

Mariners are advised that the following **Wash Restriction Areas** are now in effect in the vicinity of locations listed below:

#### Victoria Channel:

- Alexandra Dock Pontoon (54 36 54N 005 54.07W)
- Abercorn Basin (54 36 20N 005 54 54W)
- AC Marriott Pontoon (54 36 14N 005 55 13W)

#### Herdman Channel:

- Richardsons Wharf Pontoon (54 37 30N, 005 53 50W)
- Divis Berth (54 37 16N 005 54 20W)
- Gotto 1 (54 37.14N 005 54 21W)

#### York Dock Basin

- Milewater Basin Pontoons (54 36 48N 005 54 39W)
- Barnett Dock (54 36 48N 005 54 45W)
- York Dock A (54 36 36 005 54 51W)

#### Musgrave Channel

- Artemis Pontoon (54 36 46N 005 53 40W)

All vessels must while in vicinity of these locations must:

- Maintain a **safe speed** while transiting
- **Minimize wake** to avoid causing disturbance or damage.
- Give a **wide berth** to all boats and pontoons.

These **Wash Restriction Areas** are **permanent** and must be adhered to at all times.

#### Additional Notes:

- Temporary Wash Restriction Areas may also be implemented as directed by **Belfast VTS** on **VHF Channel 12** or through further Notices to Mariners.
- Mariners are reminded that excessive wake can occur even while complying with Notice to Mariners No. 11 of 2018, which imposes a 6-knot speed restriction.
- Notice to Mariners No. 4 of 2023 is hereby rescinded.
- For further information or clarification, contact Belfast VTS.

PORT OPERATIONS  
BELFAST  
6th January 2025

A handwritten signature in black ink, appearing to read 'K. G. Allen'.

CAPTAIN K. G. ALLEN  
HARBOUR MASTER

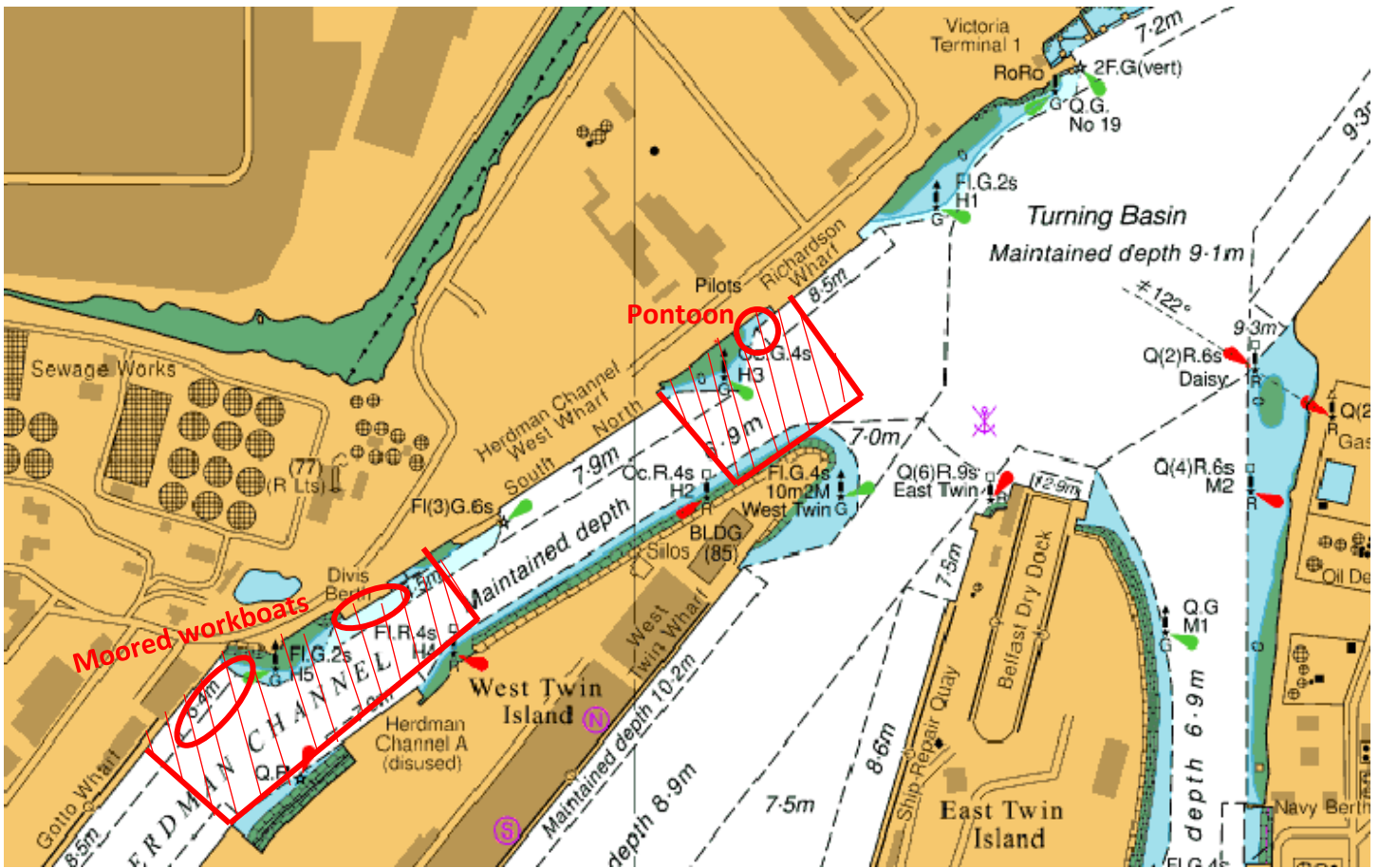


Figure A: Herdman Channel Wash Restriction Areas by Richardson's Wharf, Divis Berth and Gottle

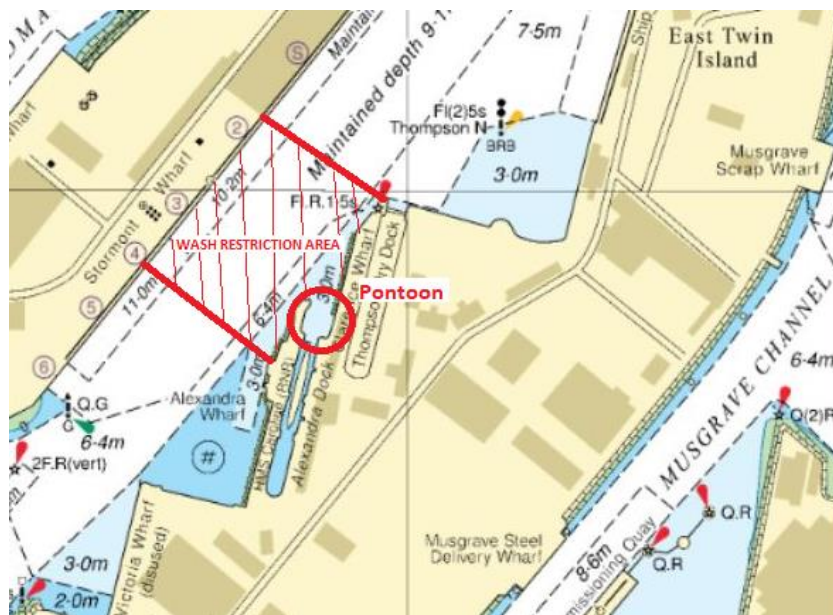


Figure B: Alexandra Dock Wash Restriction Area

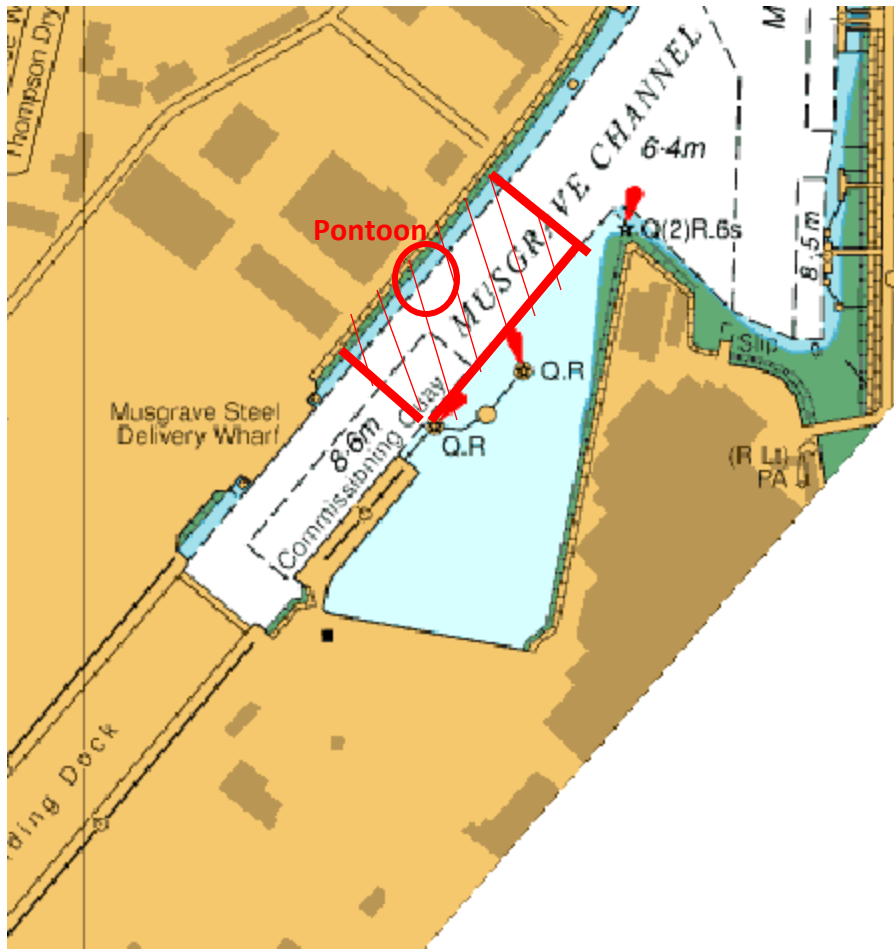


Figure C: Musgrave Channel- Artemis Pontoon

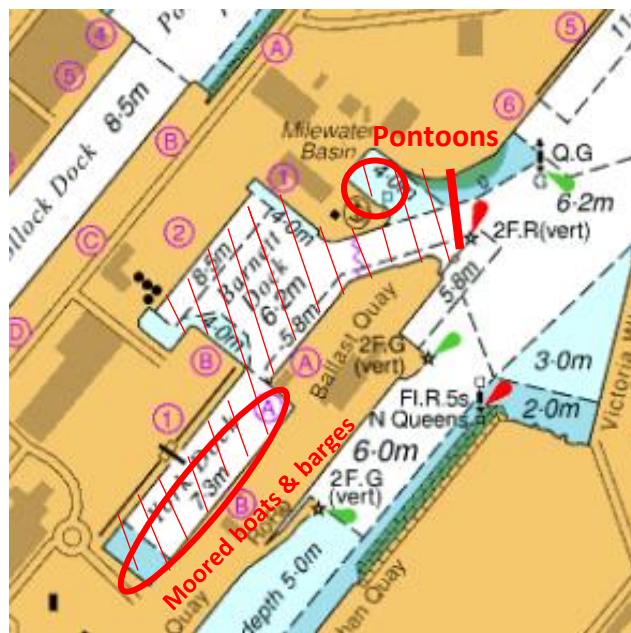
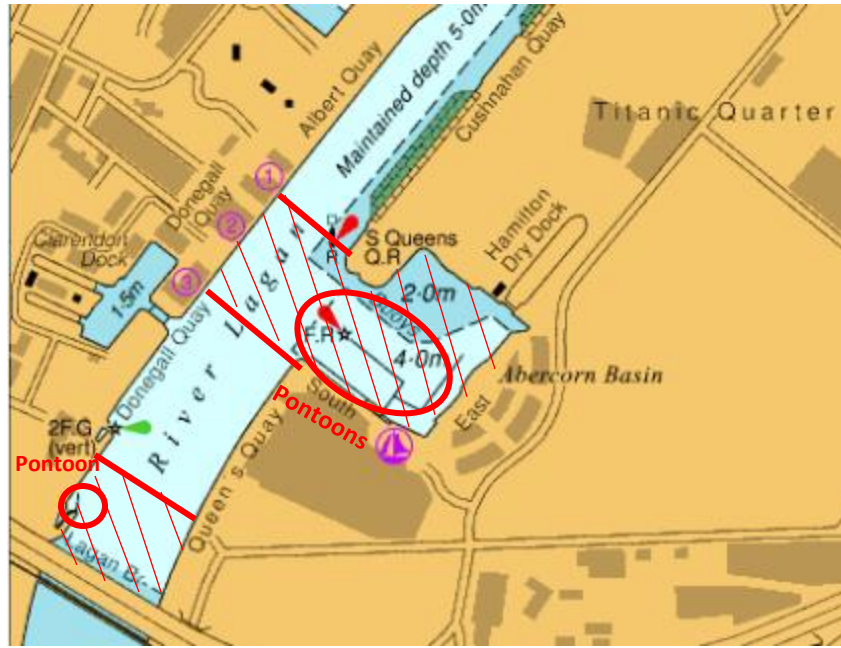


Figure D: Milewater Basin, Barnett Dock and York Dock Wash Restriction Area



*Figure E: Abercorn Basin and AC Marriott Hotel Pontoon Wash Restriction Area*